

# FAST-MAG



# UPDATE

May 2009

**H**ELP WANTED! At the International Stroke Conference in February 2009, FAST-MAG presented data on the high rate of calls that result in an enrollment. Paramedics throughout Los Angeles County are responsible for making this a reality. Not every call results in an enrollment but every call counts. If symptom onset is less than 2 hours and your patient is LAPSS positive *MAKE THE CALL!*

### Enrollment Updates (as of 04/30/09)

Number of Patients Enrolled = **755**

Number of Enrolling Hospitals = **47**

### FAST-MAG Enrollment Numbers

- Average time from paramedic arrival at patient to ED drop-off = **34 minutes**
- Average time from stroke onset to start of study drug = **48 minutes**
- Number of patients receiving study drug within one hour of symptom onset = **69%**
- Number of patients receiving study drug between 1-2 hours after symptom onset = **25%**



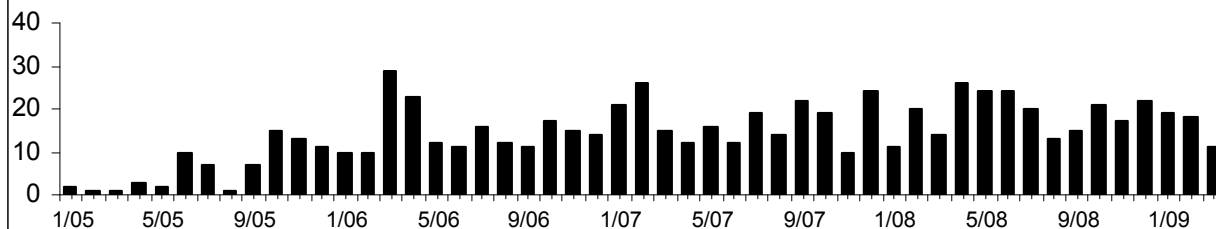
### Stroke Type

Cerebral infarct = 59%  
 Intracerebral hemorrhage = 24%  
 TIA = 15%  
 Other = 2%

### Enrollment by EMS Agency

LAFD .....	268
LA Co FD.....	257
Long Beach FD .....	33
Torrance FD .....	32
Santa Monica FD .....	23
Glendale FD .....	17
Burbank FD.....	16
Pasadena FD.....	16
La Verne FD.....	14
West Covina FD.....	11
Redondo Beach FD .....	9
Arcadia FD.....	8
San Marino FD.....	7
South Pasadena FD .....	7
Manhattan Beach FD.....	6
El Segundo FD .....	5
Culver City FD.....	5
Downey FD .....	3
Hermosa Beach FD .....	3
Compton FD.....	3
Beverly Hills FD .....	3
Sierra Madre FD.....	2
Montebello FD .....	2
Monrovia FD.....	2
Monterey Park FD.....	1

### Monthly Enrollments



---

# Meet Your Enrolling MD's



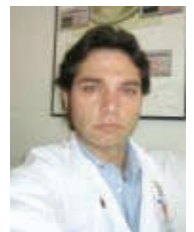
**Jeffrey Saver, MD**, the principal investigator for FAST-MAG, is the director of the Stroke Center and professor of neurology at the David Geffen School of Medicine at UCLA. After Dr. Saver received his medical degree from Harvard, he pursued post-graduate studies in neurology, behavioral neurology and cognitive neurology at Harvard, the University of Iowa and Brown University, respectively. Dr. Saver is the author or co-author of over 200 research articles and he serves on the editorial board of several scientific journals. His research interests range from acute stroke treatment and prevention to brain imaging and clinical trial design.

**Sidney Starkman, MD**, has a unique distinction in that he is board certified in both neurology and emergency medicine. He serves as co-principal investigator for FAST-MAG. Dr. Starkman earned his medical degree at Georgetown Medical School in DC and his neurology residency at Columbia-Presbyterian in New York. Many years later he completed an emergency medicine residency at the University of Arizona. Dr. Starkman developed the Emergency Neurology Program at UCLA, where he also serves as the co-director of the Stroke Center and director of the Stroke Study Network. He leads the "Brain Attack" Team at UCLA Medical Center.



**David S. Liebeskind, MD**, is the Neurology Director of Stroke Imaging at UCLA and leads the training program in Vascular Neurology. Dr. Liebeskind studied chemical engineering at Columbia University followed by medicine at the New York University School of Medicine. His medical internship was completed at Beth Israel Hospital in Boston. At UCLA he completed a neurology residency and fellowships in stroke and neurovascular disease. Dr. Liebeskind spent 4 years on the faculty of the University of Pennsylvania; he is now associate professor at UCLA. He has authored more than 200 papers and abstracts and serves on numerous editorial boards.

**Nerses Sanossian, MD**, is an assistant professor of neurology and associate director of the Neurocritical Care/Stroke Section at USC School of Medicine. His research interests include acute stroke therapy, stroke prevention and cholesterol. Dr. Sanossian was born in Lebanon and grew up in the San Fernando Valley. His medical degree is from the Albert Einstein College of Medicine in New York. He completed a fellowship at the UCLA Stroke Center and has published over 80 papers and abstracts. Dr. Sanossian is one of three physicians on the Spanish-language enrollment line for FAST-MAG.



**Lucas Restrepo, MD**, was born in Medellin, Columbia, where he attended medical school and worked for a year as a volunteer community physician. He completed his neurology residency at Georgetown University in Washington D.C. and did a fellowship in stroke at Johns Hopkins Hospital in Baltimore. Before joining the faculty at UCLA he spent a year at the University of Texas in Houston. Currently Dr. Restrepo is completing a PhD in molecular and cellular biology. He is an enrolling physician for FAST-MAG on the Spanish line.

**Latisha Ali, MD**, is an assistant professor of neurology at UCLA. Dr. Ali attended medical school and completed her neurology residency at Indiana University. She did her medical internship at Temple University in Philadelphia. The American Academy of Neurology recently awarded Dr. Ali a clinical research fellowship, just one of many honors she has received. In addition to serving as an investigator for numerous studies at UCLA, Dr. Ali has authored or co-authored several articles for professional journals. She is an enrolling physician for Spanish-speaking FAST-MAG patients.

