



UPDATE

November 2008

FAST-MAG ACHIEVES 50%! Congratulations to one and all for bringing FAST-MAG to the 50% milestone on 8/28/08, with the enrollment of our 649th patient! Since the last "Update" in September, 33 new patients have been enrolled, and 2 new hospitals activated. LA County paramedics continue to blaze the trail in prehospital stroke research. Your efforts on behalf of each and every potential FAST-MAG patient make a difference and are greatly appreciated!

Enrollment Updates (as of 11/4/08)

Number of Patients Enrolled = 651
 Number of Enrolling Hospitals = 46
 (see back of page for a complete listing)

FAST-MAG Enrollment Numbers

- Average time from paramedic arrival at patient to ED drop-off = 34 minutes.
- Average time from stroke onset to start of study drug = 46 minutes.
- % of patients receiving study drug within one hour of symptom onset = 70%.
- % of patients receiving study drug between 1-2 hours after symptom onset = 24%.



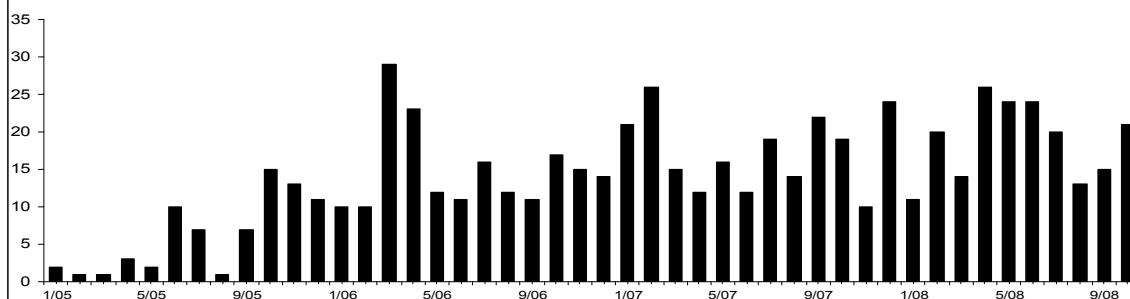
Stroke Type

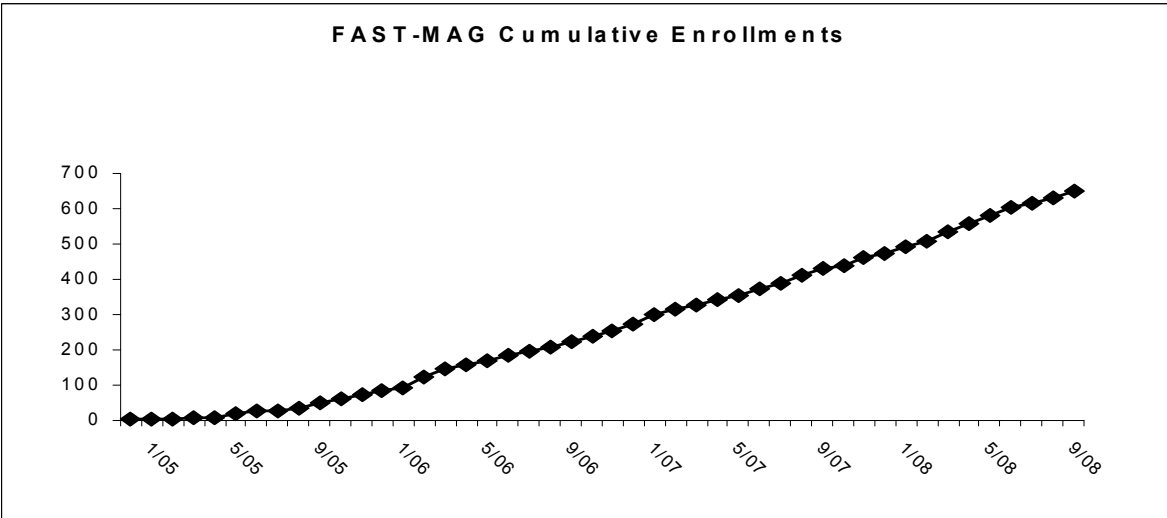
Cerebral Infarct = 55%
 TIA = 14%
 Intracerebral hemorrhage = 23%
 Other = 2%

Enrollment by EMS Agency

LAFD	234
LA County FD	223
Torrance FD	28
Long Beach FD	25
Santa Monica FD	18
Glendale FD	14
Burbank FD	14
Pasadena FD	13
West Covina FD	11
La Verne FD	10
Redondo Beach FD	8
Arcadia FD	8
South Pasadena FD	7
Manhattan Beach FD	6
El Segundo FD	5
San Marino FD	5
Culver City FD	4
Downey FD	3
Beverly Hills FD	3
Compton FD	3
Hermosa Beach FD	3
Montebello FD	2
Monrovia FD	2
Sierra Madre FD	1

Monthly Enrollments





FAST-MAG Hospitals Actively Enrolling

Henry Mayo Newhall	37	LAC-Olive View	11
Little Co. of Mary-Torrance	35	San Dimas	10
Huntington	31	Citrus-Queen of Valley	10
St. Francis Medical Center	29	LAC-USC	9
Methodist Hospital of So. Cal	29	Glendale Adventist	9
Torrance Memorial	28	LAC-Harbor	8
Providence St. Joseph	28	Glendale Memorial	8
Antelope Valley Hospital	28	Brotman Medical Center	8
Long Beach Memorial	27	Providence Tarzana	7
Presbyterian Intercommunity	25	Citrus-Intercommunity	7
Lakewood Regional	23	Kaiser-Woodland Hills	6
Sherman Oaks	22	Whittier Hospital-AHMC	6
UCLA Medical Center	20	St Mary Medical Center	5
Pomona Valley Hospital	20	Little Co. of Mary-San Pedro	4
St. John's Health Center	18	Olympia Medical Center	3
Cedars-Sinai	18	Good Samaritan	3
Santa Monica UCLA	17	CFRMC-Memorial Campus (closed)	2
California Hospital	17	Mission Community	2
Marina Del Rey Hospital	15	Encino Hospital	1
West Hills Hospital	14	Lancaster Community	1
White Memorial	13	Kaiser-Sunset	1
Verdugo Hills Hospital	12	Garfield Medical Center	--
Northridge-Roscoe Campus	12	Hollywood Presbyterian	--
Providence Holy Cross	11		

FAST-MAG enrolling phone numbers may be programmed into your phones:

English: 310-794-6069 Spanish: 310-794-3598

www.fastmag.info