



UPDATE

January 2006

Happy New Year to all! Here are the latest FAST-MAG enrollment statistics, as of 12/31/05. We are close to “triple digits” in patient enrollment, and continue to set records in treating stroke patients earlier than ever before. Paramedics from 16 provider agencies have enrolled patients, making FAST-MAG a true county-wide effort. We will be welcoming new hospitals to the FAST-MAG team in the coming year, as we strive towards our goal of all hospitals and all paramedics participating. Thank you for your enthusiasm and effort on behalf of stroke patients in Los Angeles County!

Enrollment Updates

Number of Enrolling Hospitals = 32
(see back of page for a complete listing)

Number of Patients Enrolled = 74

Enrollment by EMS Agency

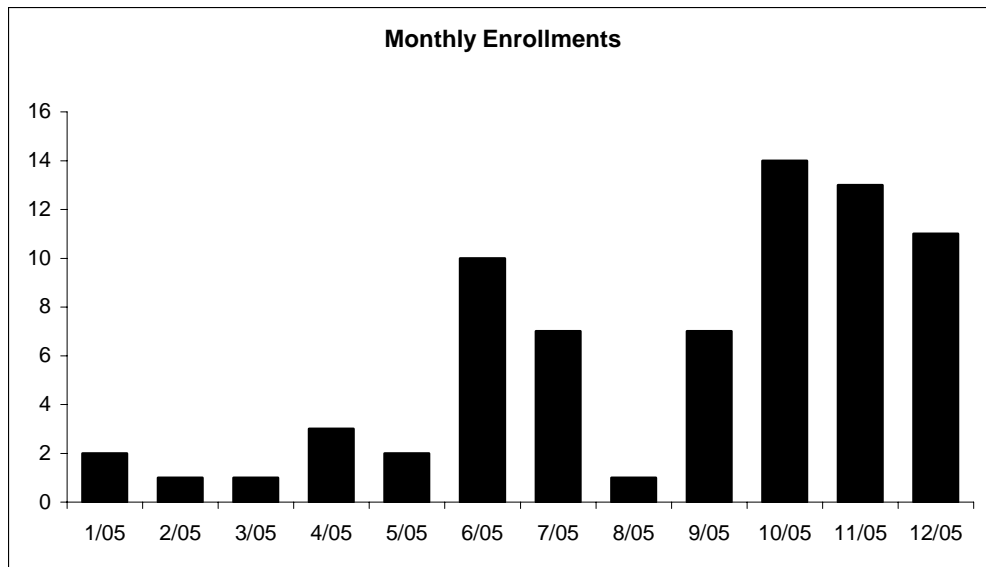
LAFD.....	33
LA County FD.....	17
Santa Monica FD.....	5
Burbank FD.....	3
Glendale FD.....	3
Long Beach FD.....	2
Redondo Beach.....	2
La Verne FD.....	1
Monrovia FD.....	1
Hermosa Beach FD.....	1
West Covina FD.....	1
Compton FD.....	1
Manhattan Beach FD.....	1
San Marino FD.....	1
Torrance FD.....	1
Downey FD.....	1

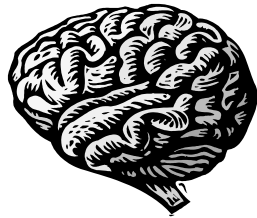
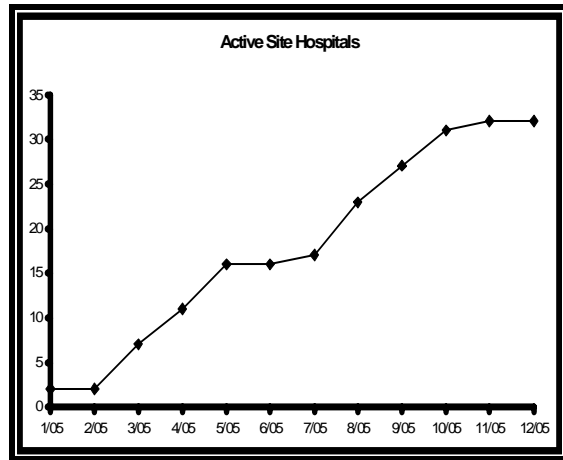
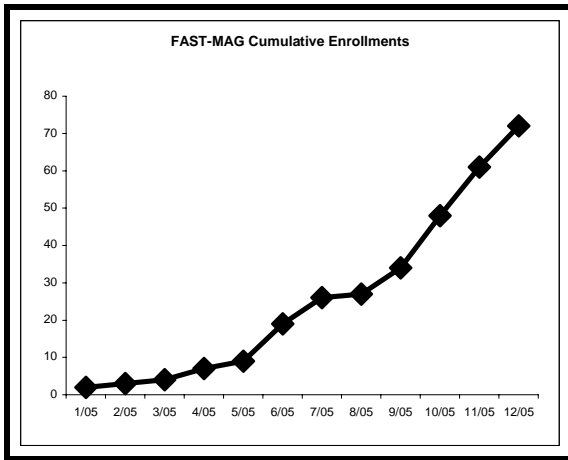
FAST-MAG Enrollment Numbers

- Average time from paramedic arrival at patient to ED drop-off = 36.5 minutes.
- Average time from stroke onset to start of study drug = 52 minutes.
- % of patients receiving study drug within one hour of symptom onset = 78% !!!
- % of patients receiving study drug within 1-2 hours after symptom onset = 22%.



Monthly Enrollments





Stroke Type

Cerebral Infarct = 37 (58%)
 Intracerebral hemorrhage = 17 (27%)
 TIA = 6 (9%)
 Other (non-stroke) = 4 (6%)

FAST-MAG Hospitals Actively Enrolling

32 Los Angeles County hospitals are open for enrollment of FAST-MAG patients. Next to each hospital name is the number of patients enrolled at each hospital:

Providence St. Joseph.....8	Northridge Hospital1
UCLA Medical Ctr7	CFRMC–Marina Campus.....1
Henry Mayo Newhall7	Torrance Memorial Med Ctr...1
LAC– Olive View5	Good Samaritan Hospital.....1
Saint John’s Health Ctr5	Kaiser– Woodland Hills.....1
Methodist Hospital of So. Cal....5	White Memorial Med Ctr.....1
Saint Francis Med Ctr4	Cedars-Sinai Med Ctr.....1
Little Co. of Mary-Torrance4	Verdugo Hills Hospital.....1
San Dimas Community3	Pomona Valley Hosp Med Ctr
West Hills Hospital3	Presbyterian Intercommunity
Santa Monica–UCLA3	Brotman Medical Center
Antelope Valley Hospital3	California Hospital
Sherman Oaks Hospital3	CFRMC-Memorial Campus
Glendale Adventist Hospital2	LAC– Harbor-UCLA
Long Beach Memorial Med Ctr ...2	LAC– USC Medical Ctr
Little Co. of Mary–San Pedro1	Huntington Memorial

Hotline: 310-825-3278 (FAST)

www.fastmag.info